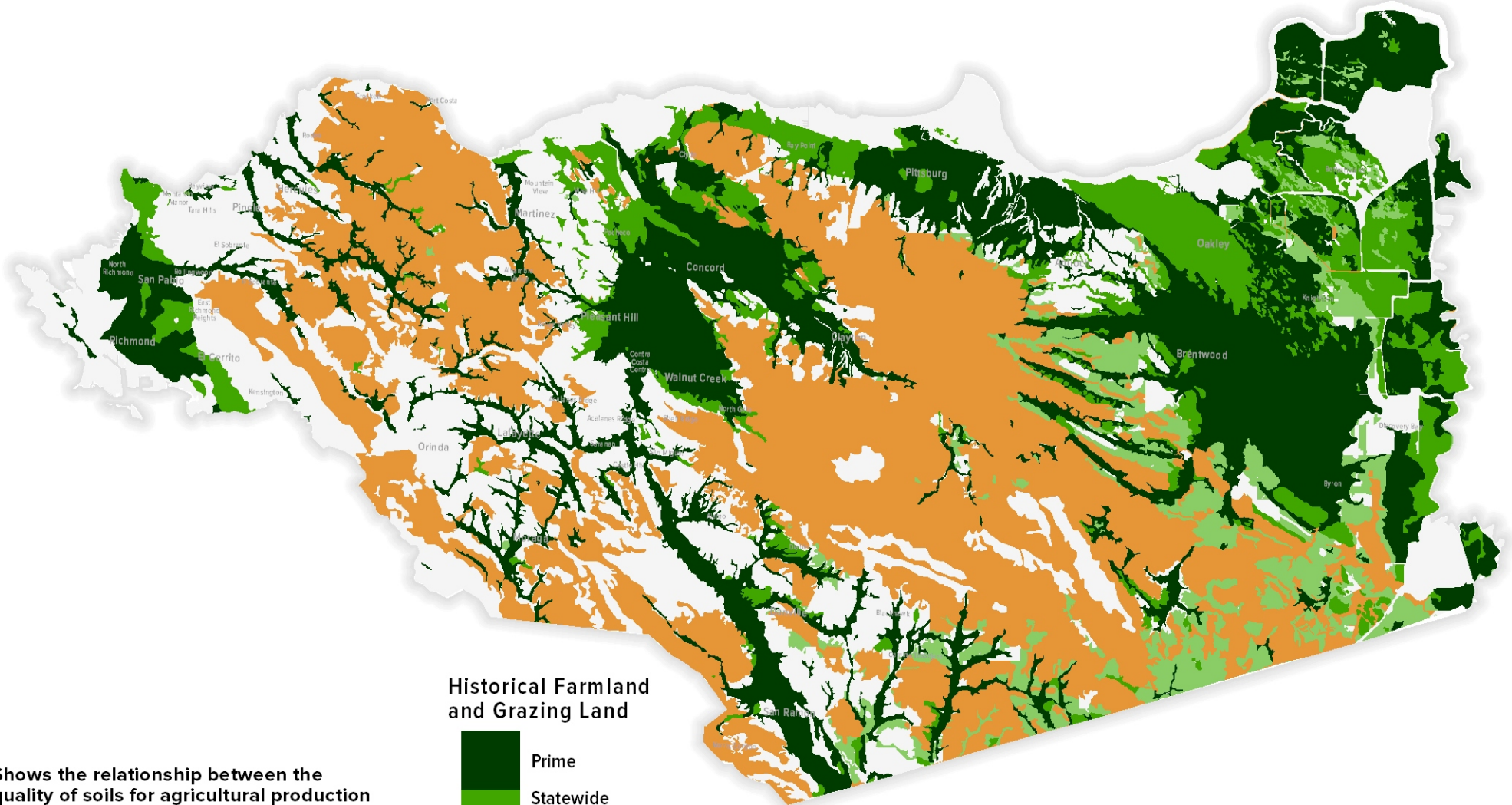


# Contra Costa County

## Yesterday's Important Agricultural Lands



Shows the relationship between the quality of soils for agricultural production from a historical survey on top and from 2010 farmland and grazing land below.

CA Dept of Conservation  
- Farmland Mapping and Monitoring Program 2010

US Dept of Agriculture  
- Soil Survey Geographic Database

CA Protected Area and National Easement Databases  
- CA Parks and Easements 2013

### Historical Farmland and Grazing Land

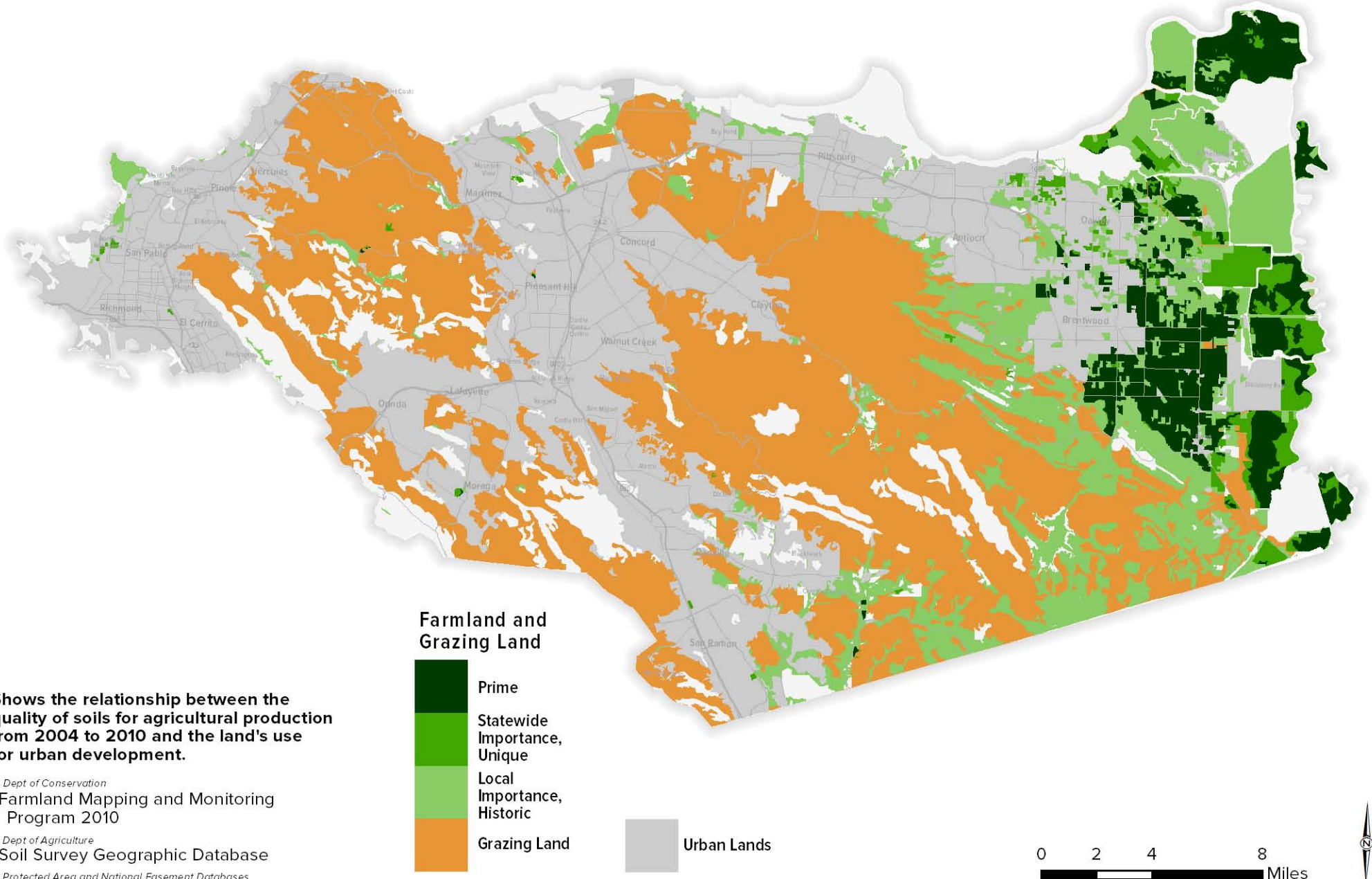


0 2 4 8 Miles



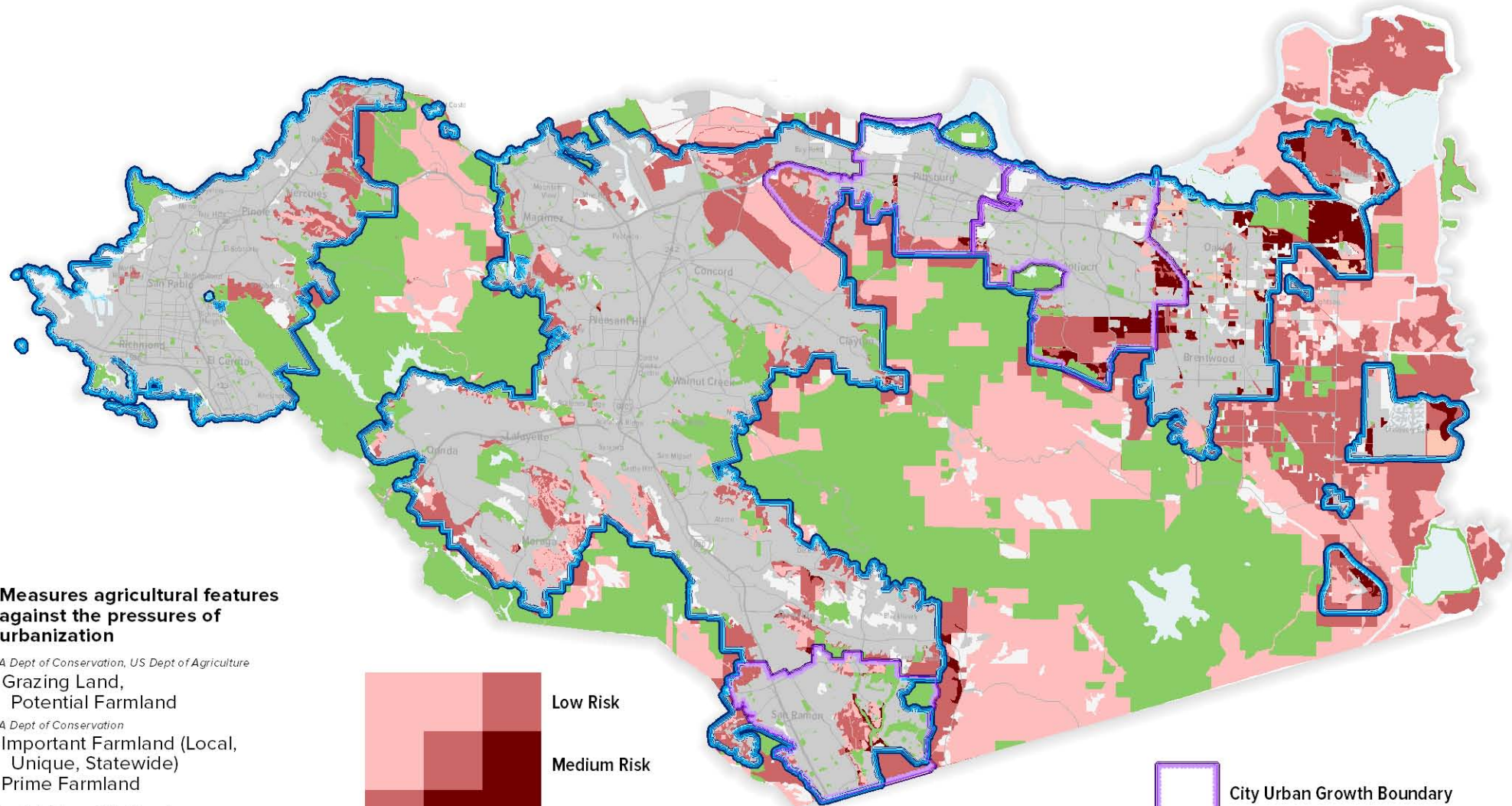
# Contra Costa County

## Today's Important Agricultural Lands



# Contra Costa County

## Agricultural Lands At Risk of Development in 2014



### Measures agricultural features against the pressures of urbanization

CA Dept of Conservation, US Dept of Agriculture

- Grazing Land, Potential Farmland

CA Dept of Conservation

- Important Farmland (Local, Unique, Statewide)
- Prime Farmland

Greenbelt Alliance At Risk Report

- At Risk tracks the pressures of urban development in 2013

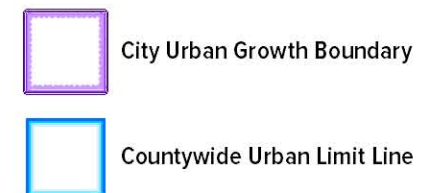
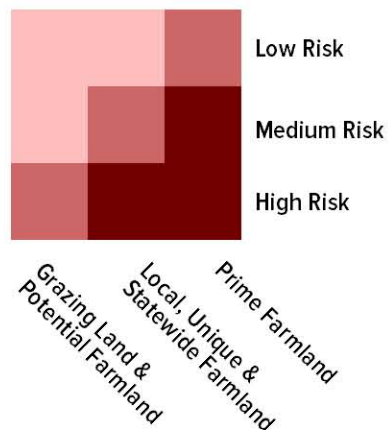
Evaluates development proposals, zoning and growth boundaries to measure the likelihood of urbanization

Contra Costa County

- Urban Growth Boundaries and Urban Limit Line

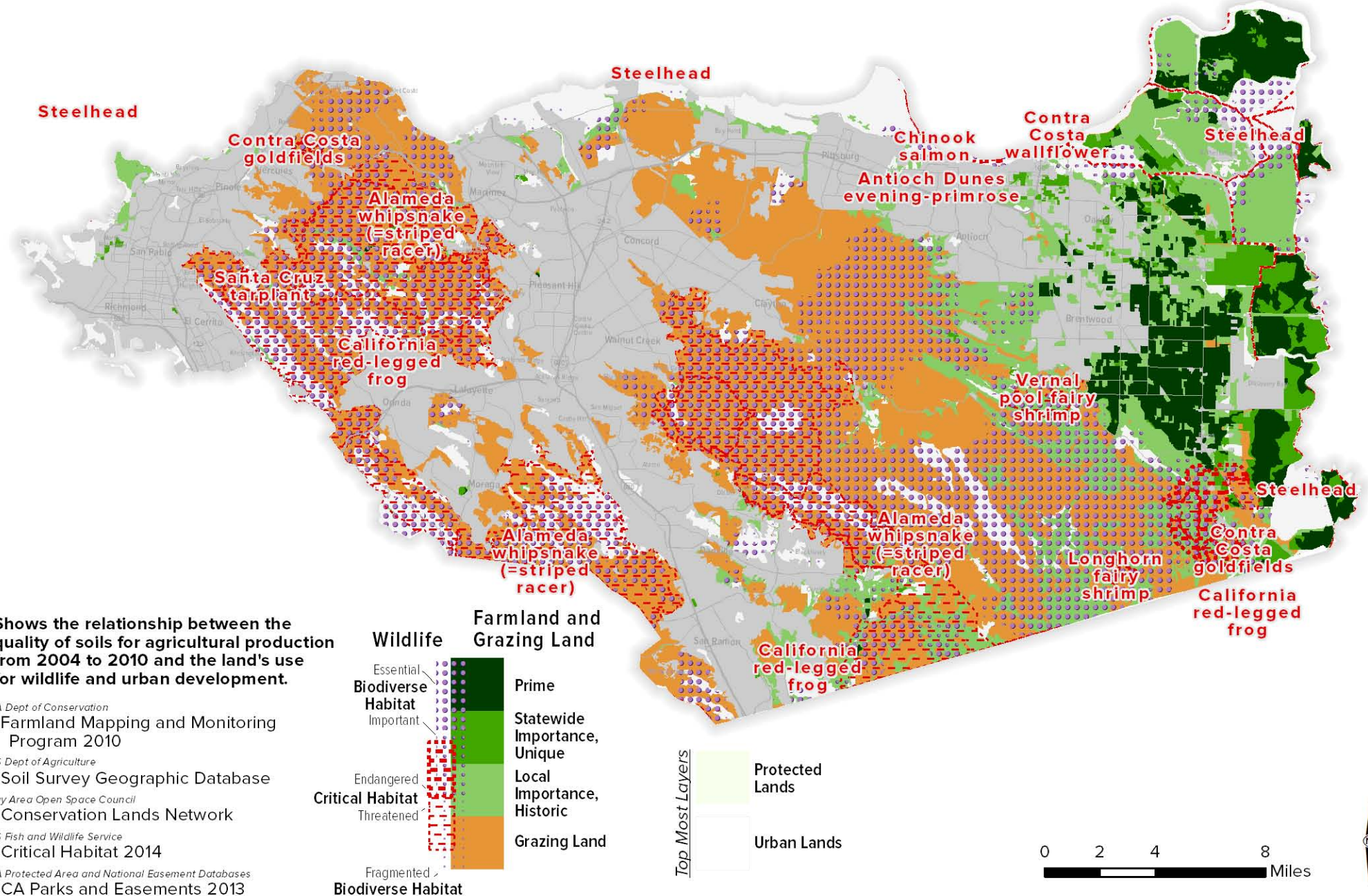
CA Protected Area and National Easement Databases

- CA Parks and Easements 2014



# Contra Costa County

## Important Agricultural Lands and Wildlife Habitat



CA Dept of Conservation  
 - Farmland Mapping and Monitoring Program 2010

US Dept of Agriculture  
 - Soil Survey Geographic Database

Bay Area Open Space Council  
 - Conservation Lands Network

US Fish and Wildlife Service  
 - Critical Habitat 2014

CA Protected Area and National Easement Databases  
 - CA Parks and Easements 2013